

# MB Key Nec Programmer Manual

## Supported vehicles:

Program new ir key for Mercedes-Benz :

W202、W208、W210、W220、W203、W215(old)、W215(new)、  
W230(old)、W230(new)、W209(HC12)、W209(ST12)、W219(  
HC12)、W219(ST12)、W211(HC12)、W211(ST12)、W230(HC  
12)、W230(ST12)、W215(HC12)、W215(ST12)、W220(HC12)  
、 W220(ST12).....



1- EIS type

2- use offset buffer (  Use Offset ETL ) - (  Use Offset Xprog )

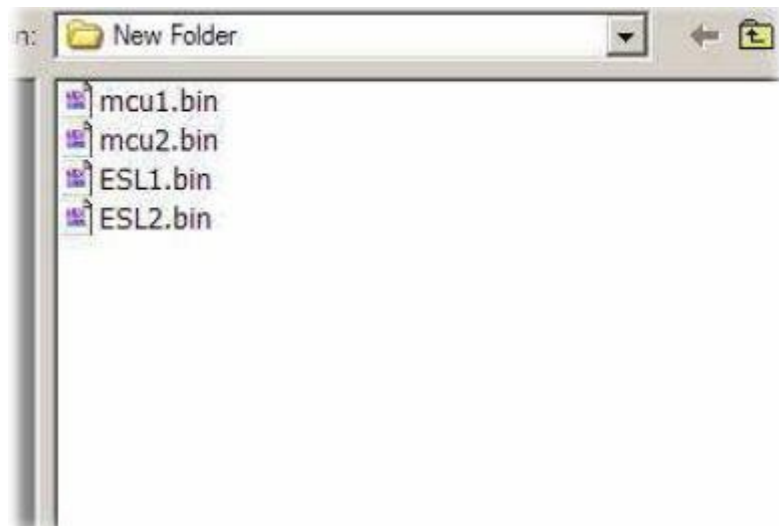
- 3- Load EIS dump
- 4- ECU type
- 5- Load ECU dump
- 6- Load ESL or ESM dump
- 7- access Ir Programmer for big plastic key .
- 8- access Ir Programmer for RENEW key function .
- 9- save EIS dump (option )
- 10- save ECU dump (option )
- 11- save ESL or ESM dump (option )
- 12- access Ir Programmer for Chrom key
- 13- ( Key 1 select to generate)- (  Key 1 don't generate )
- 14- Process ( generate select keys/modify all loading dumps )
- 15- access Ir Programmer for small plastic key .
- 16- (  generate keys dumps for **Ir Programmer use**)- (  generate keys dumps for **NEC\_Programmer**).

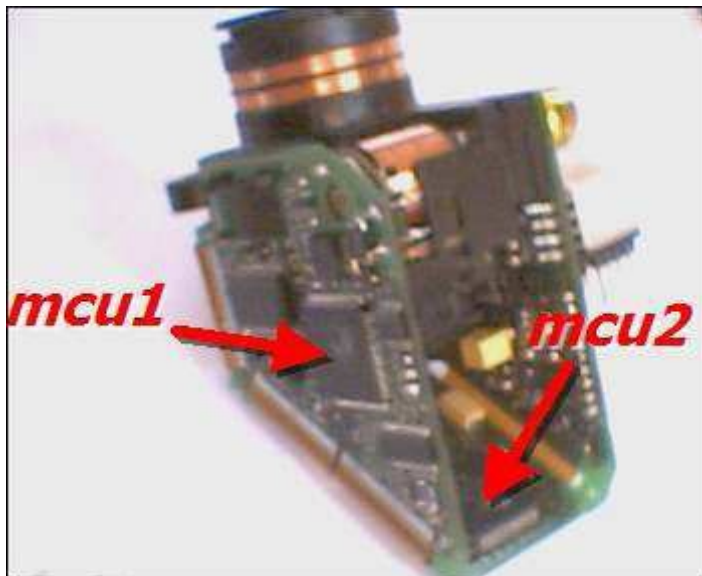
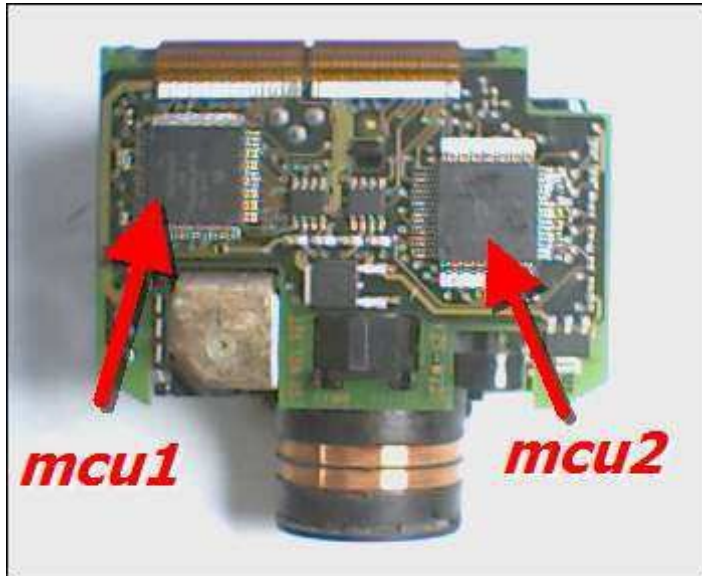
## How use it

Exampel for W210 /W202 /W208/W220

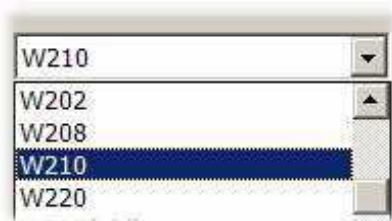
All type under year 2000 need only to modify (EIS and ESL for 210) and(EIS and ESM for W220)

First we have to read 2 mcu from EIS / ESL or ESM and save both as BIN file





choose EIS type



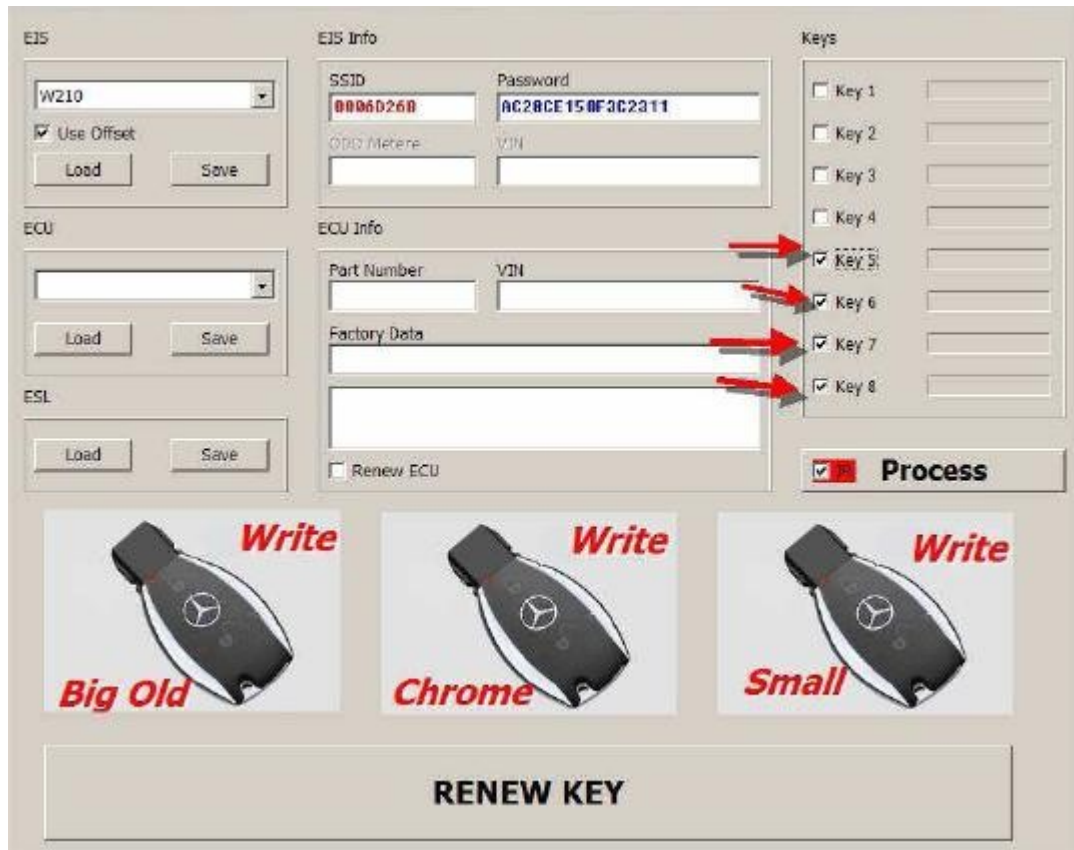
1- load EIS mcu1

load ESL ESL1 or ESM chip93c56

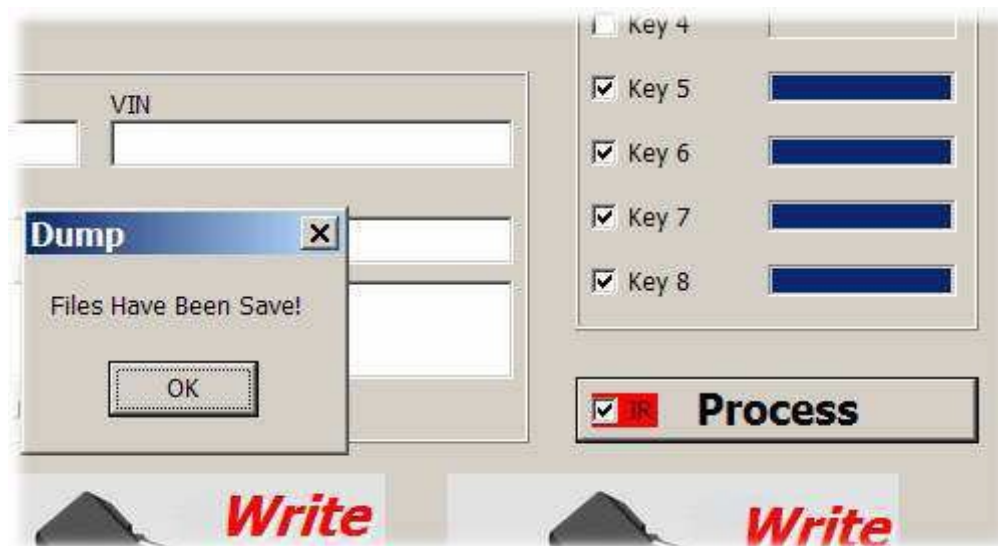


SSID and Pass appear

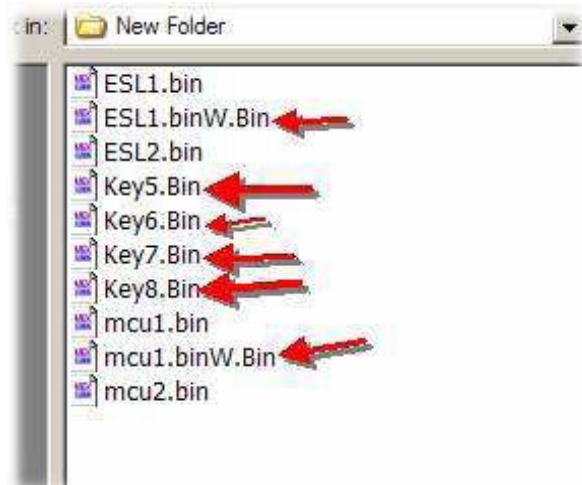
choose key to generate we choose as exampl key 5/6/7/8



press Process

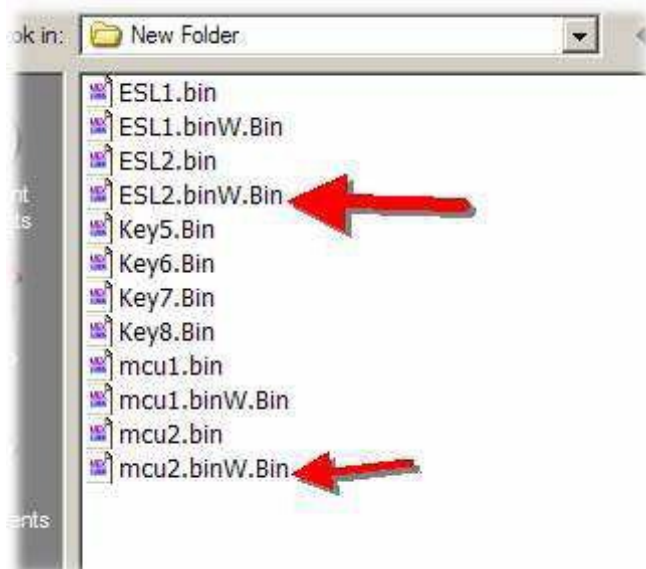


Files Have Been Save message appear to inform that Mcu1 and ESL1 had modify and save in same folder and key 5/6/7/8 had generate and save in same folder



2- load EIS mcu2 and ESL2 choose key 5/6/7/8 then press Process

Files Have Been Save message appear to inform that Mcu2 and ESL2 had modify and save in same folder



Write all modify dumps to chip and mcu  
Now we have end from modify dumps and generate keys .

## MCU Programming

Run NEC\_Prog.exe

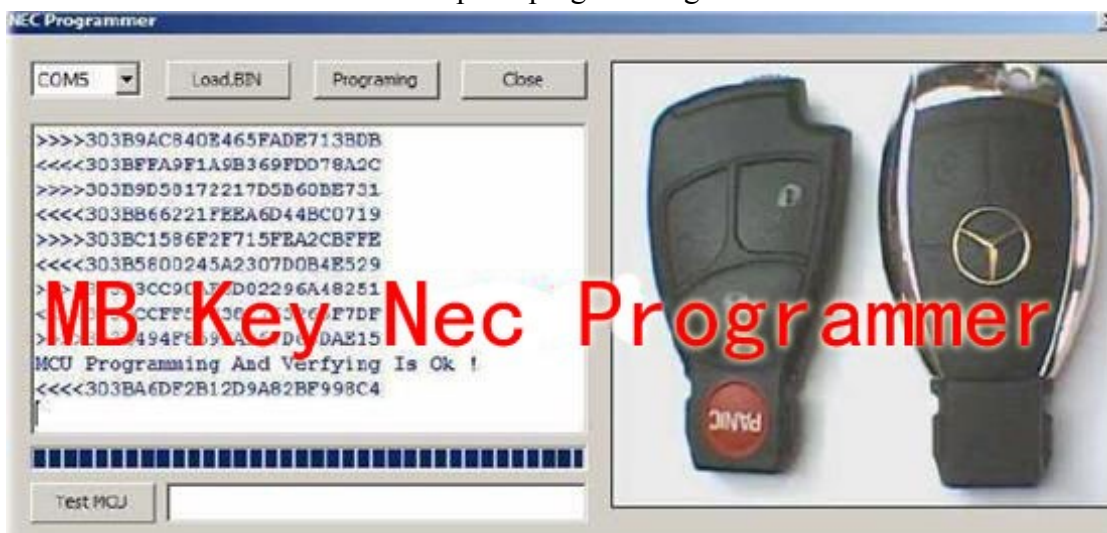
NEC\_Prog dialoge appear select COM port as USB convert statu



Message ( Hardware OK ) must appear . if no't check USB cabel or you have select error port .

press (load,BIN )then load BIN key file from folder .

After we insert MCU in ZIF socket press programming



MCU Programming And Verfyng Is OK ,must appear at box message .

Solder MCU to PCB .

insert key into EIS , key LED on thin off thats mean key programming is OK ,and you can run the car .